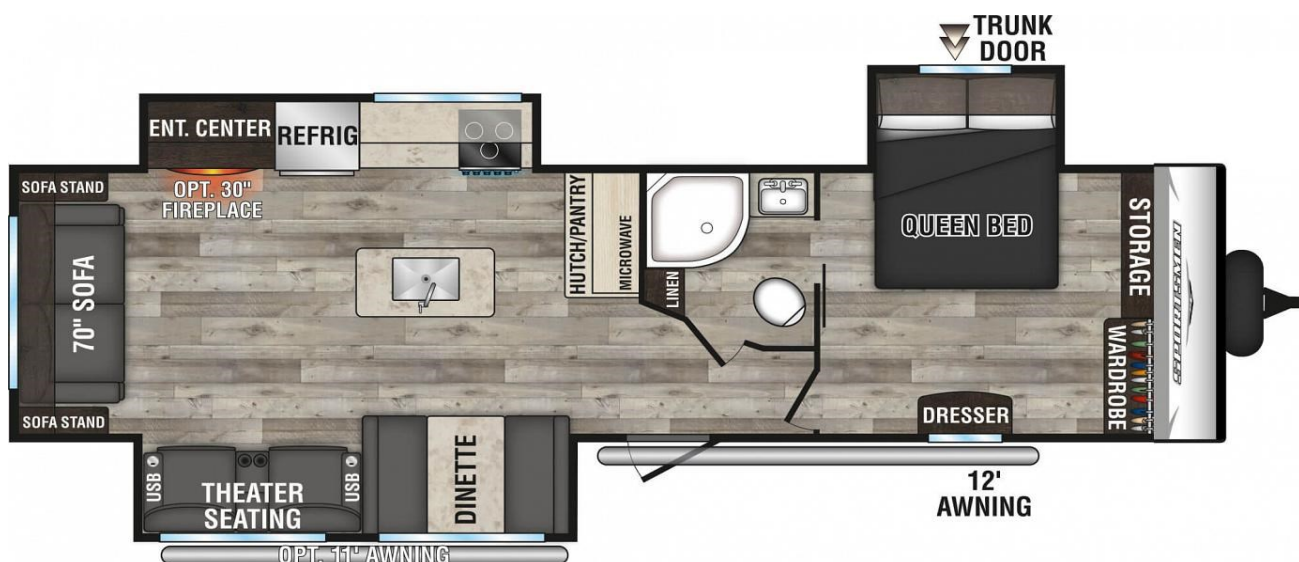




RECREATIONAL
VEHICLES

SPORTSMEN SE

303QBSE



UVW (Unloaded Vehicle Weight)*	7,550
Dry Hitch Weight*	890
Dry Axle Weight*	6,660
CCC (Cargo Carrying Capacity)	1,250
GVWR	8,800
Interior Height	78"
Exterior Height (with A/C)	11'
Exterior Width	96"
Exterior Length**	34' 7"

Refrigerator (Cubic Feet)	7
Water Heater Cap. (Gal. G/E w/DSI)	6
Fresh Water Cap. (Gal.)	45
Waste Water Cap. (Gal.)	32
Gray Water Cap. (Gal.)	32
LP Gas Cap. (Lbs.)	40
Furnace BTUs (1,000s)	30
Tire Size	15"
Awning	12'/11' opt.

*This weight reflects the rolling average unit weight for each model. Your trailer weight will vary according to optional equipment.

**This exterior height is with A/C.

***Exterior length is measured from rear of bumper to leading edge of coupler.

FUNTIMECAMPERS.COM

317-890-0791



9702 PENDLETON PIKE

INDIANAPOLIS, IN 46236